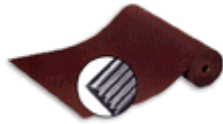
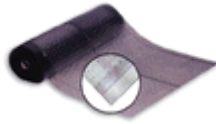


Manufacturer's Rubber and Supply (603) 678-9610



**1/8" STANDARD
CORRUGATED RUBBER**

A durable corrugated rubber runner engineered for maximum service and long wear. Has a smooth-back finish. Available in half rolls approximately 25 yards. or full rolls approximately 50 yards.



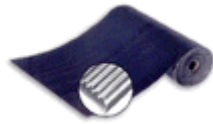
**Klear-Trac VINYL
MATTING**

Klear-Trac runners are transparent, heavy duty, commercial gauge, industrial quality plastic matting products. They are designed to protect and enhance the decorative beauty and quality of fine carpets and other flooring products.



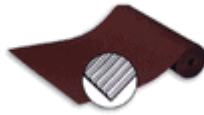
**Tredair INTERLOCKING
COMFORT MATTING**

Available in either standard or grease resistant. A cushioned mat approx. 1/2" thick. Underside constructed of numerous honeycombed, square, air cells giving resilience and foot comfort. Beveled edges. Sections can be interlocked to form any length. Easy to install.



**HEAVY CORRUGATED
RUBBER**

A solid corrugated rubber matting construction designed for extra heavy duty service. Has a smooth-back finish.



**Easy-Sweep VINYL
MATTING**

A durable vinyl runner with a round ribbed corrugation running lengthwise. Available in six appealing decorator colors. Has a textured impression back.



Finger Trac RUBBER MATS

Designed with thousands of vertical rubber fingers to clean shoes of dirt, grit, sand, mud and snow. The fingers scrape shoe soles clean, eliminating ugly tracking problems and save on floor and rug maintenance.



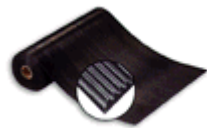
**A.S.T.M. SWITCHBOARD
Type 1 Rubber**

A corrugated all-rubber insulating matting specially compounded for use as a floor covering for protection of workers.



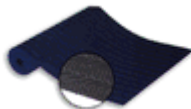
**CORRUGATED VINYL
MATTING**

A durable vinyl runner featuring angular pointed corrugations running lengthwise. Has a textured impression back.



**CONDUCTIVE RUBBER
MATTING**

Electrically conductive SBR rubber matting with corrugated face and plate back finish. Permanently branded on the back side with TBC Conductive in 1" letters.



Tuff-Trac VINYL MATTING

An attractive modern Herringbone ribbed interlocking surface design.



**MILITARY GRADE
DIAMOND SWITCHBOARD
VINYL MATTING**

For use where neoprene military grade diamond switchboard is not specified. Conforms to MIL_SPEC: MIL-M-15562G Type III dated 5/31/96 as amended.

Manufacturer's Rubber and Supply (603) 678-9610



**GOLF SPIKE & SKATE
Kleen-rite Design
RUBBER MATTING**

A specially compounded rubber runner with a non-directional textured finish.



**NON-MILITARY DIAMOND
VINYL MATTING**

Diamond Plate is a uniquely engineered, deeply-embossed, steel-deck design matting that offers an attractive, practical and commercial grade vinyl runner with a high technology appearance.



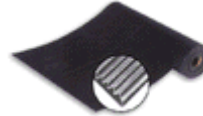
**SMOOTH SWITCHBOARD
VINYL MATTING**

Conforms to MIL-M-15562G Type II dated 5/13/96 as amended. Oil, ozone, corona and fire resistant.



Kleen-rite Rubber Matting

A lightweight, fine textured, all rubber runner with a non-directional design.



**1/8" FEDERAL
SPECIFICATION
CORRUGATED VINYL**

A vinyl runner featuring angular pointed corrugations. Textured back prevents slippage.



**Safety Edge VINYL
DIAMOND PLATE RUNNER**

A uniquely engineered, deeply embossed, steel-deck pattern matting that combines a high-tech, skid-resistant design with safety yellow borders for high visibility and attention.



STIPPLE VINYL MATTING

A lightweight, fine textured vinyl runner with a non-directional, attractive design.



**ELDORADO VINYL
MATTING**

A lightweight, distinctive textured vinyl runner with a non-directional, attractive design. Smooth back.



PYRAMID VINYL MATTING

A uniquely engineered non-directional pattern combined with a special formulation resulting in an exceptionally slip-resistant vinyl runner.



**Nu-Tred FLAT RIB VINYL
MATTING**

A new & improved solid vinyl compound designed with a flat ribbed pattern running lengthwise and a smooth back finish.